



Technical features, standard equipment,  
optional features and dimensional data



# BLT 8000

## TUNNEL WASHER ARM

## STANDARD EQUIPMENT



**Nitrogen accumulator and block valve on the cylinders**



**Nitrogen accumulators on the hydraulic cylinders  
to act as shock absorbers**



**DIN attachment**



**Proportional hydraulic block**



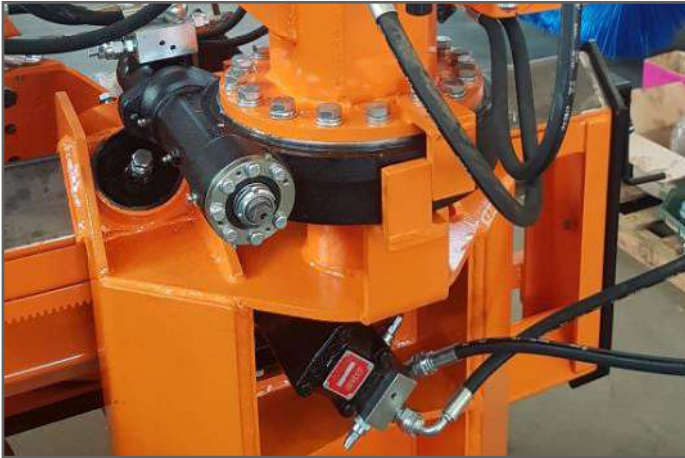
**Hydraulic cylinders with block valves**



**Sliding Rail**



# TUNNEL WASHER ARM BLT 8000



**Hydraulic engine for lateral translation mechanism**



**N. 2 steel bars with interchangeable nozzles**



**N. 4 adjustable wheels to ensure the protection of the swivel head**



**N. 8 adjustable, polyzene sliding rails for translation movements**



**Hydraulic engine for brush swivelling**



**Parking feet**





**Electronic push-button panel with joystick**



**Hydraulic fifth wheel/circle frame for rotary movements**



**Hydraulic fifth wheel/circle frame for head rotation**



**Swivelling head**



**Cleaning brush (D 1000 mm, L 1800 mm)**



**Left/Right hydraulic lateral translation movements**



# TUNNEL WASHER ARM BLT 8000

## OPTIONAL FEATURES



**High-pressure swivelling heads spray bar**



**Swivelling heads spray bar**



**Auxiliary bar to spray cleaning agents**



**Swivelling nozzles washing bar (length 4 meters)**



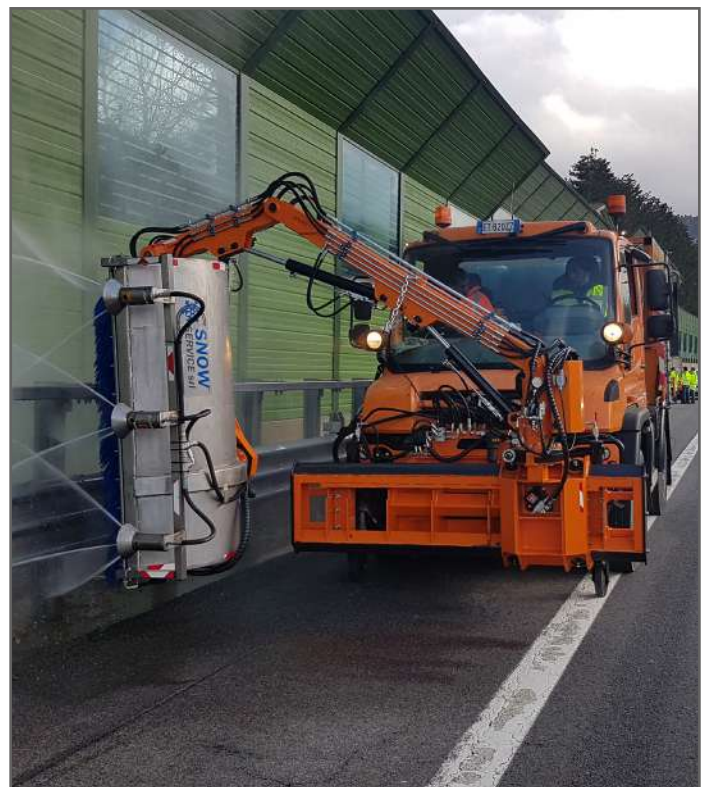
**Hydraulic wheels to control the truck oscillating movements**



**Anti-torsion frame for MB UNIMOG**



## PHOTO GALLERY





# TUNNEL WASHER ARM BLT 8000





## STANDARD EQUIPMENT FOR THE REAR MODULE



**Water tank with a capacity of 2000/3000/4000/5000 liters + additional tank (500 LT capacity for cleaning agents)**



**Oval-shaped fiberglass tank** (capacity available 4000 LT, 5000 LT, 6000 LT, 7000 LT, 8500 LT, 10000 LT)



**Parallelepiped-shaped fiberglass tank with internal breakwater walls** (capacity available 2000 LT, 3000 LT, 4000 LT, 5000 LT)



**High-pressure hydraulically driven pump**



**Electronic push-button panel**



**Manual valve with UNI-STORZ coupling**  
for tank filling/emptying processes



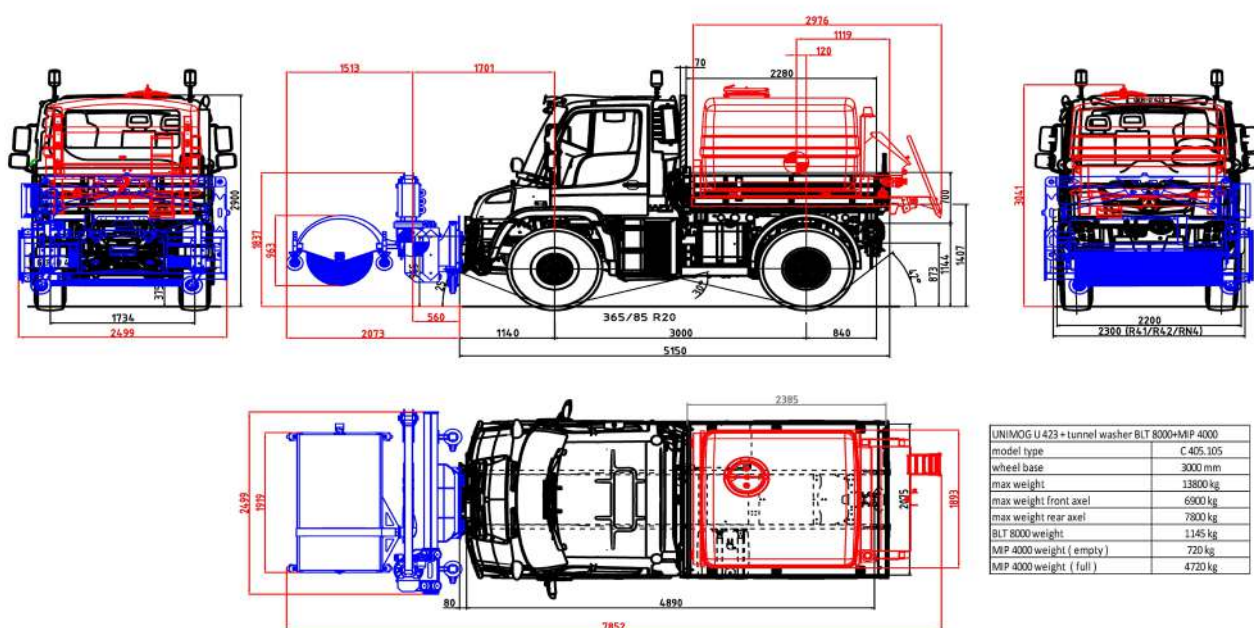
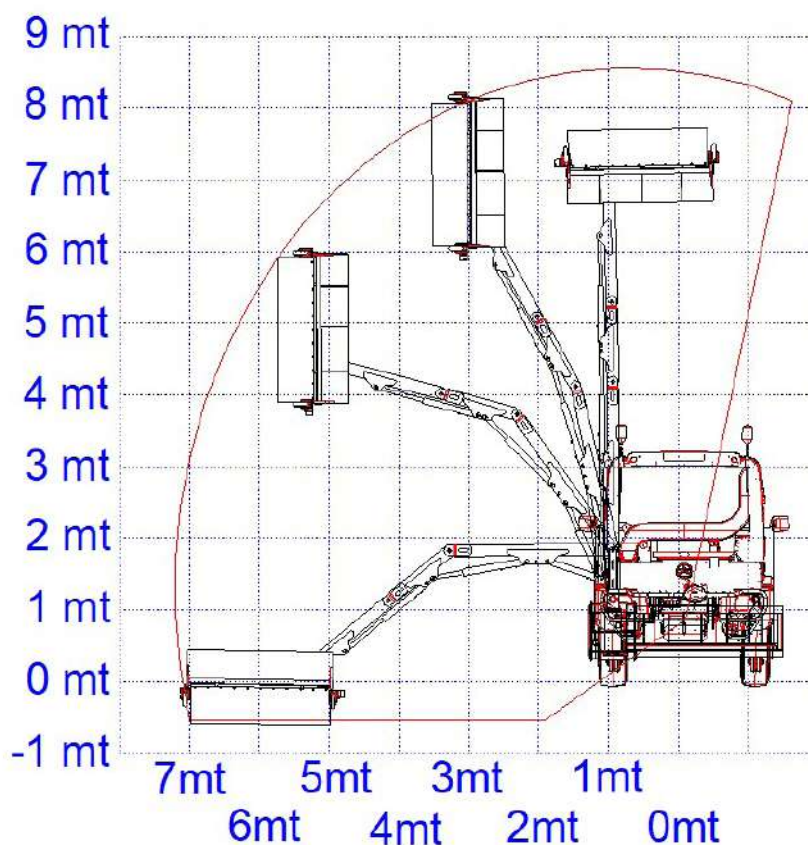
# TUNNEL WASHER ARM BLT 8000

## PHOTO GALLERY REAR MODULE



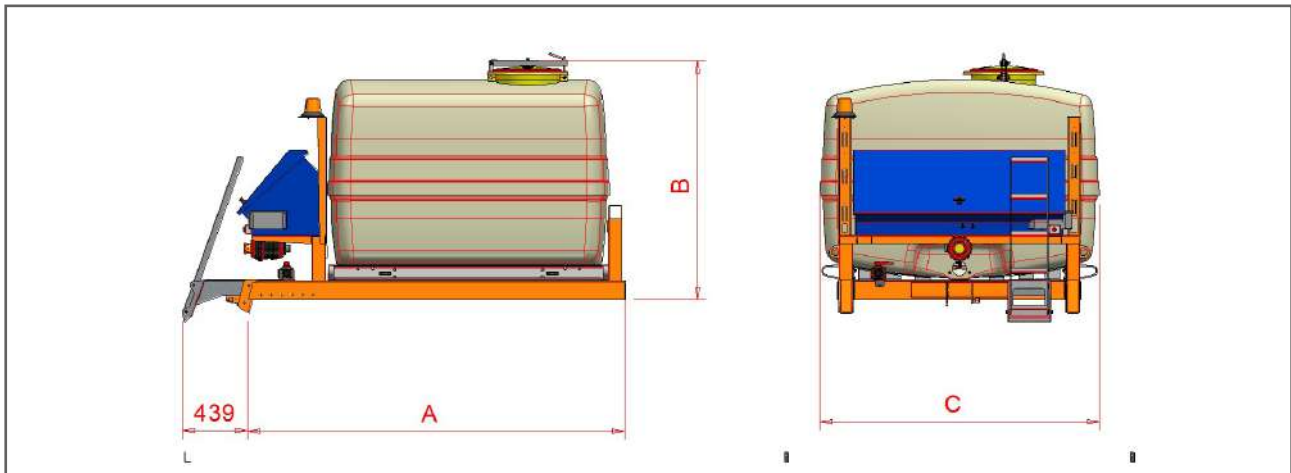


## TECHNICAL DRAWINGS

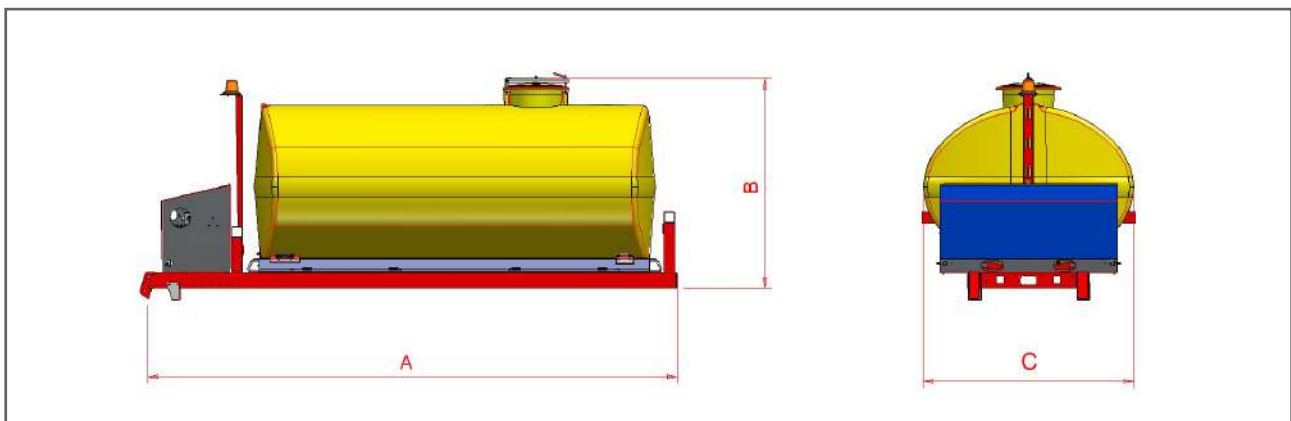




# TUNNEL WASHER ARM BLT 8000



CODE	MODEL	A	B	C	WEIGHT (EMPTY)
5041130	MIP 2000 LT P	2500 mm	1500 mm	1900 mm	730 Kg
5041140	MIP 3000 LT P	2500 mm	1600 mm	1900 mm	940 Kg
5041150	MIP 4000 LT P	2550 mm	1750 mm	1900 mm	970 Kg
5041160	MIP 5000 LT P	2950 mm	1750 mm	1900 mm	1030 Kg



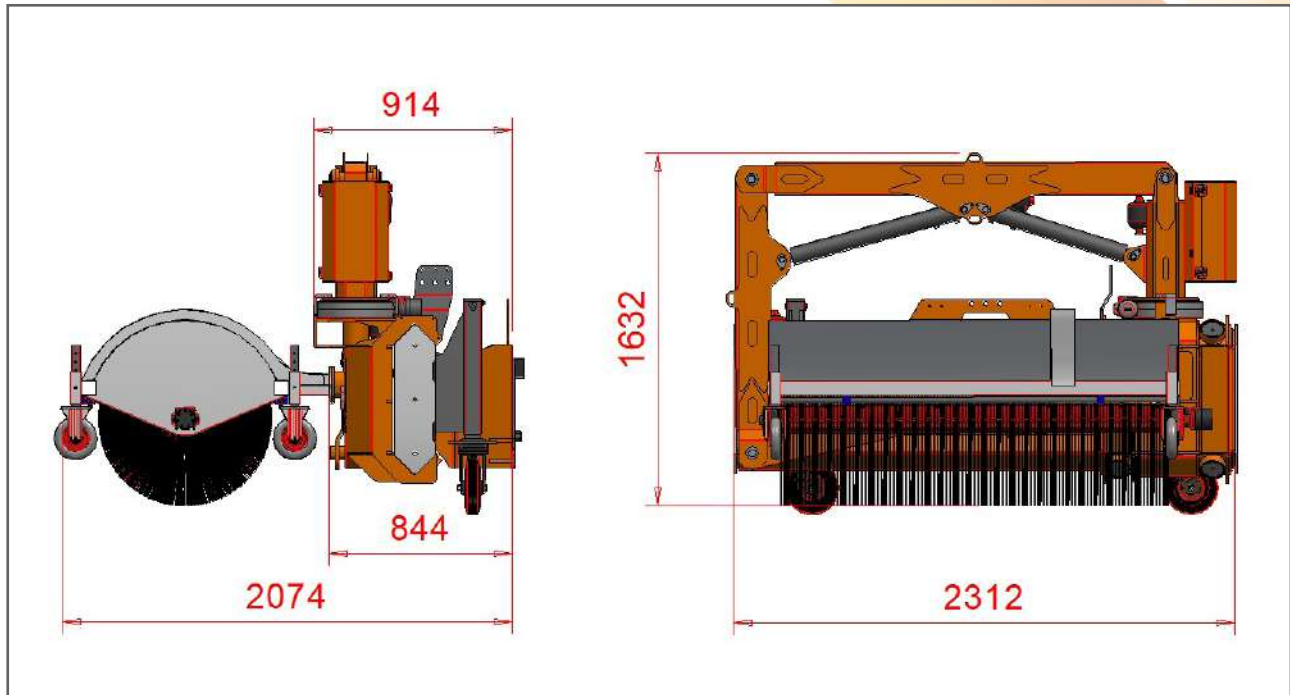
CODE	MODEL	A	B	C	WEIGHT (EMPTY)
5041170	MIP 4000 LT O	4500 mm	1580 mm	1800 mm	830 Kg
5041180	MIP 5000 LT O	4500 mm	1720 mm	1800 mm	910 Kg
5041190	MIP 6000 LT O	4500 mm	1900 mm	1800 mm	980 Kg
5041200	MIP 7000 LT O	5200 mm	1900 mm	1900 mm	1100 Kg
5041210	MIP 8500 LT O	5400 mm	2020 mm	1900 mm	1160 Kg
5041220	MIP 10000 LT O	6000 mm	2020 mm	2000 mm	1250 Kg



# TUNNEL WASHER ARM BLT 8000



## TECHNICAL SHEET



### 1. Main features

The hydraulic articulated tunnel washer arm is completely made of steel with high mechanical properties in order to provide and guarantee a good weight/strength balance. The BLT 8000 arm is equipped with a 76060 A/B coupling plate, being completely articulated in all its functions and movements. It is controlled hydraulically by means of a push-button panel equipped with a joystick to be installed in the driver's cabine. The BLT 8000 washer arm is completely articulated in all its movements allowing to work both on the right and on the left side without restrictions. Thanks to the lateral hydraulic translation left-right the arm ensures efficient, thorough cleaning even in areas difficult to be reached, always maintaining its high operability. The BLT 8000 arm is made up of a fix part (backplate to be installed on the vehicle), a slide (left/right translation) on which are connected the articulated arms hydraulically driven. On the last arm a hydraulic rotary fifth wheel is installed in order to rotate the brush cleaning spray bar. The BLT 8000 can be supplied with a cleaning brush width 1800 mm or with high pressure cleaning bar/s with special swivel heads.

### 2. Application Fields

The BLT 8000 equipment is mainly designed to clean tunnels, sound-absorbing walls, vertical walls and windows, road signs.

### 3. Notes

Municipal Tech provides a custom-made service, realizing effective customized solutions paying high attention to the specific needs of all the customers.

:: Authorized Dealer in UAE ::



**M. Zaki Siddiqui**  
Managing Partner

Buti Storage, Warehouse # 2, Jebel Ali Industrial First,  
P.O. Box 58542, Dubai, United Arab Emirates  
Mob: +971 50 213 5880, Tel: +971 4 341 5900, Fax: +971 4 341 9550  
Email: [gmadubai@eim.ae](mailto:gmadubai@eim.ae), Web: [www.gmadubai.ae](http://www.gmadubai.ae)